

2015 Campus Master Plan Update

First Public Hearing

July 15, 2014

Room 106



UNIVERSITY OF CENTRAL FLORIDA

Agenda

- Sign-in
- Welcome and Introductions
- Purpose
- Comment Opportunities
- Rules of Order
- 2015 Campus Master Plan Overview
- Public Comments
- Conclusion



Purpose of Public Hearing

To hear public comment on the
2015-2025 University of Central Florida
Campus Master Plan Update



Document Availability

- Starting Tuesday, July 22, 2014
- <http://www.fp.ucf.edu/mp2015/>
- John C. Hitt Library Circulation Desk

For further information contact:
maria.yebra-teimouri@ucf.edu



Comment Period

- Based on time set for reviewing agencies
- Ninety (90) days = Late October through November 7, 2014



Opportunities To Comment

- By mail:

Maria Yebra-Teimouri
Office of Facilities Planning & Construction
3528 North Perseus Loop
PO Box 163020
Orlando, FL 32816-3020

- By e-mail:

Maria.yebra-teimouri@ucf.edu

- Website: **www.fp.ucf.edu/mp2015/**



Rules of Order / Public Hearing Process

- All speakers must complete a comment sheet and sign the speaker roster.
- All speakers must be signed in prior to the start of the public comment period.
- Each speaker will be given three (3) minutes.
- When presenting, please state your name, address, and affiliation before beginning your comment.
- Written comments may be submitted tonight, online, or by mail.
- Oral comments will be treated the same as written comments.
- All comments and questions should be held until after the presentation.

Please treat all participants with the respect that you would like others to show to you.



UNIVERSITY OF CENTRAL FLORIDA

Website: www.fp.ucf.edu/mp2015/

Master Plan Process



UNIVERSITY OF CENTRAL FLORIDA

Master Plan Components

- 1013.30 FS
- Ten year planning horizon
- 17 elements
- Goals, objectives, and policies
- Data and analysis
- Maps



Required Elements

- Future Land Use
- Intergovernmental Coordination
- Capital Improvements
- Recreation and Open Space
- General Infrastructure
- Housing
- Conservation
- Transportation



Reviewing Agencies

- Orange County
- Seminole County
- City of Orlando
- City of Oviedo
- St. Johns River Water Management District (SJRWMD)
- East Central Florida Regional Planning Council (ECFRPC)
- Florida Department of Economic Opportunity
- Department of Environmental Protection
- Department of Transportation
- Department of State
- Fish and Wildlife Conservation Commission
- Division of Historical Resources



Campus Master Plan Schedule

- Element Group Effort (January – March 2014)
- Open House (April 17, 2014)
- First Public Hearing (July 15, 2014)
- Agency Reviews and Public Comments (90 Days)
- Second Public Hearing and Adoption by Board of Trustees (November 20, 2014)
- Petitions and Objections (30 Days to file with BOT)
- Negotiate Campus Development Agreement with Orange County



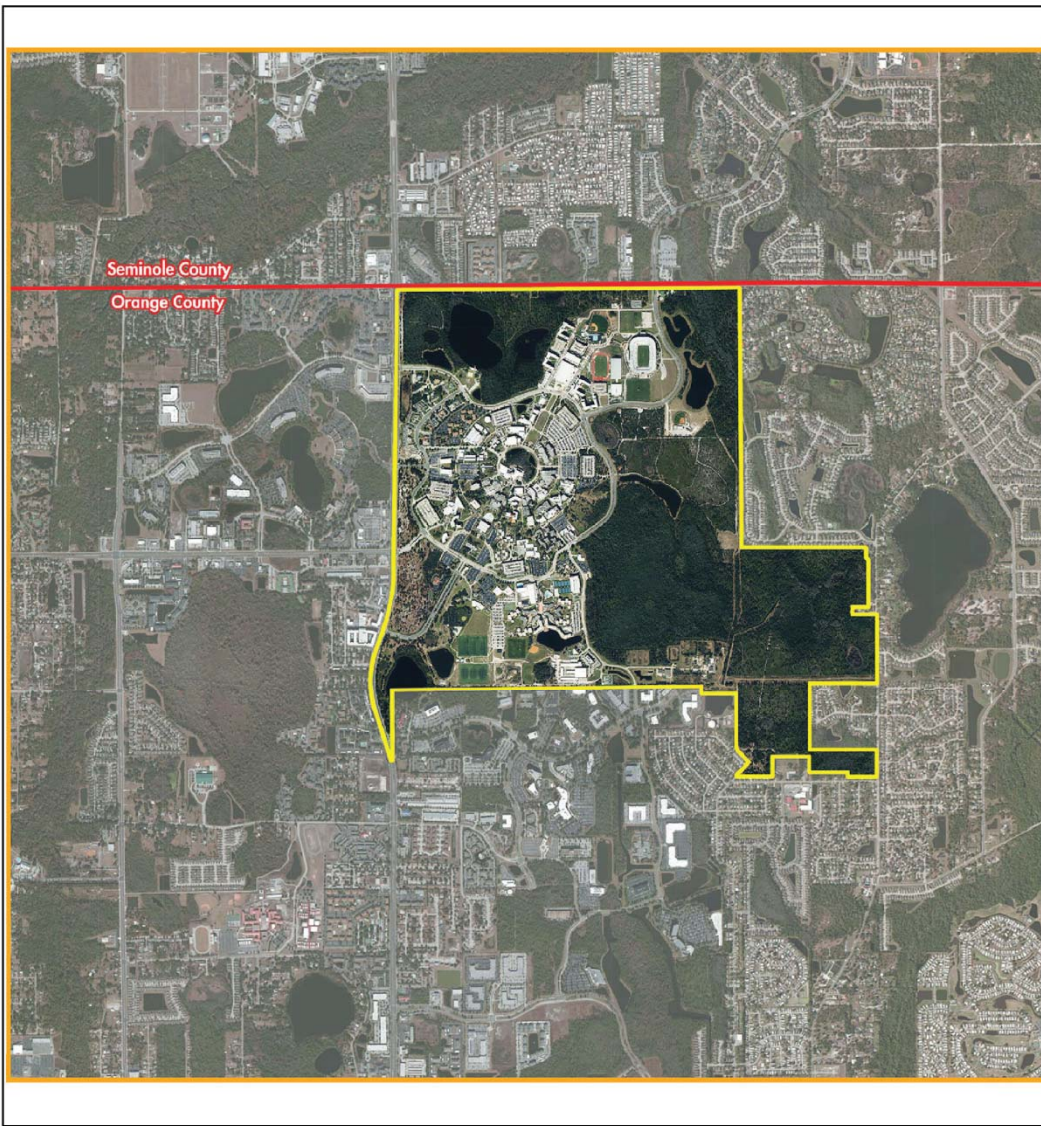
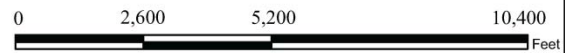


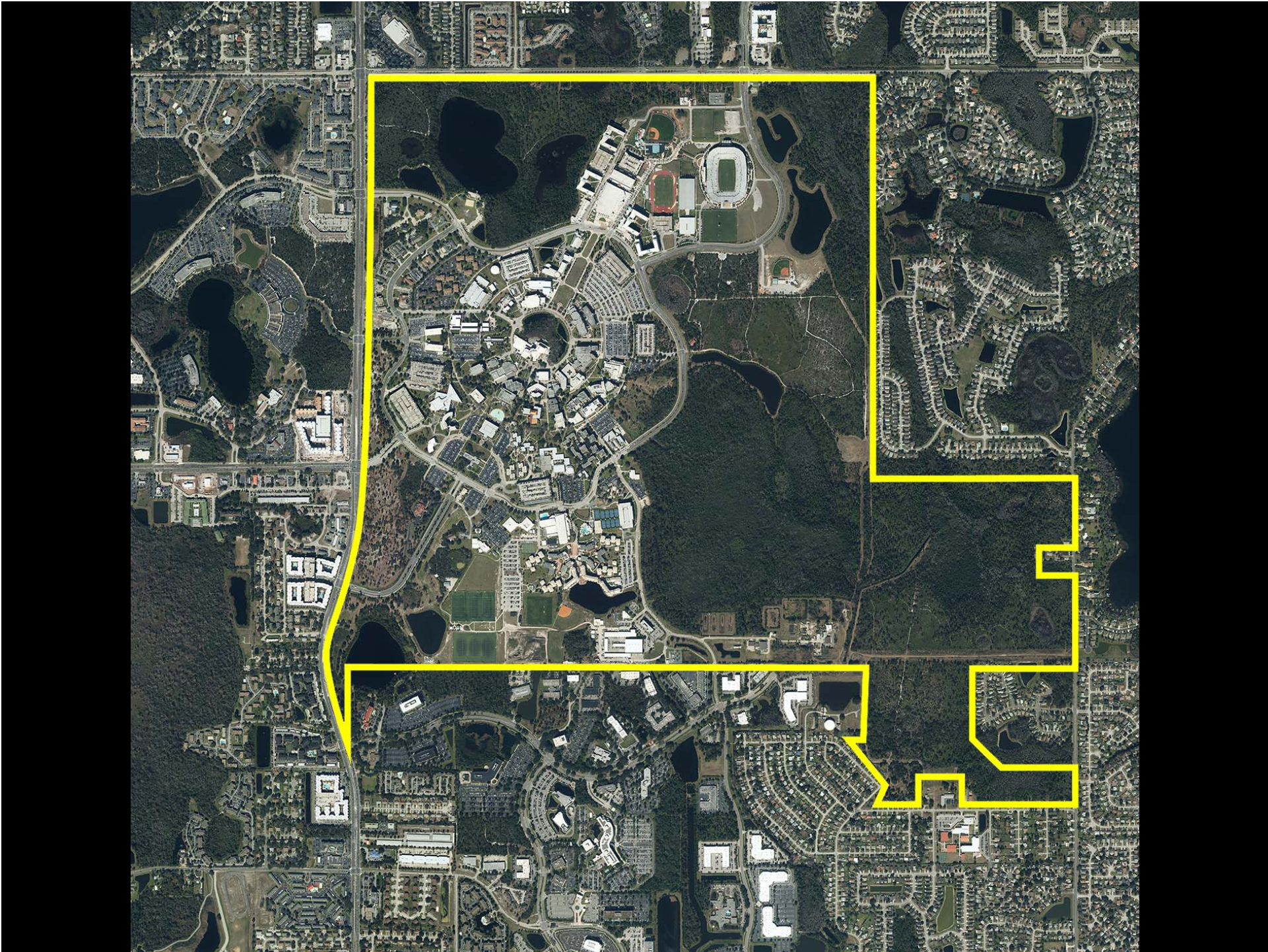
Figure 2.11-1
Context Area Map

Comprehensive Master Plan Update
University of Central Florida
 Orlando, Florida
 2015-2025

All maps are diagrammatic and conceptual. The various areas shown are approximate and not to survey accuracy. The intent of these maps is to illustrate general areas of existing or potential use.

- Legend**
- Study Area
 - County Boundary
 - UCF Campus Boundary





Map Overview

- Future Land Use
- Urban Design / Capital Improvements
- Recreation and Open Space
- General Infrastructure (Stormwater)
- Housing
- Conservation
- Transportation



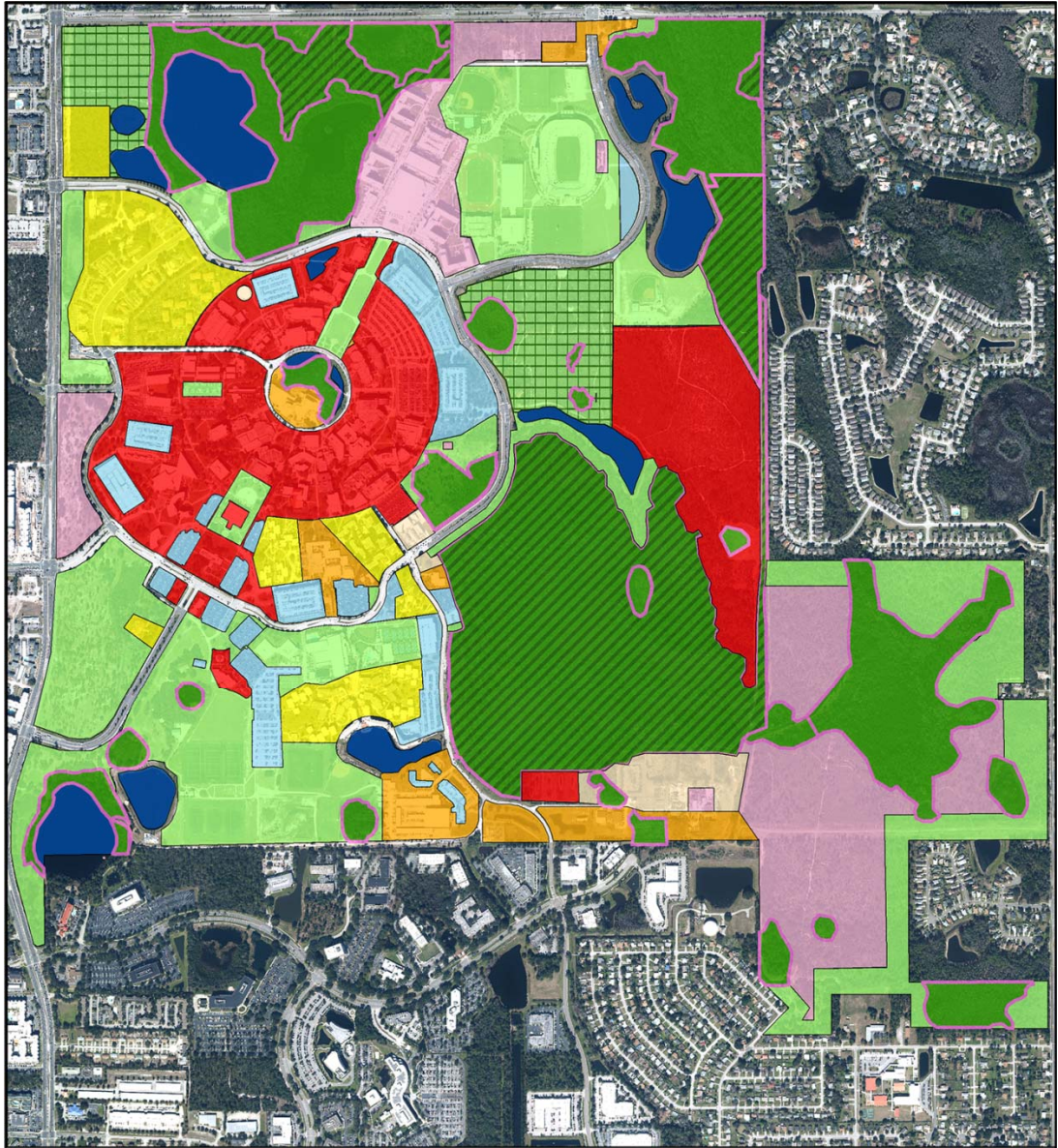


Figure 4-1

Future Land Use
 Comprehensive Master Plan Update
University of Central Florida
 Orlando, Florida
 2015-2025

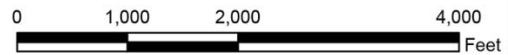
Legend

- | | | |
|-------------------|------------------------|-----------------------|
| Parking | Utility | Residential |
| Support | Conservation (wetland) | Recreation/Open Space |
| Academic/Research | Conservation (upland) | Mixed Use |
| Lakes | Conservation Easements | |



All maps are diagrammatic and conceptual. The various areas shown are approximate and not to survey accuracy. The intent of these maps is to illustrate general areas of existing or potential use.

Rev 20140701



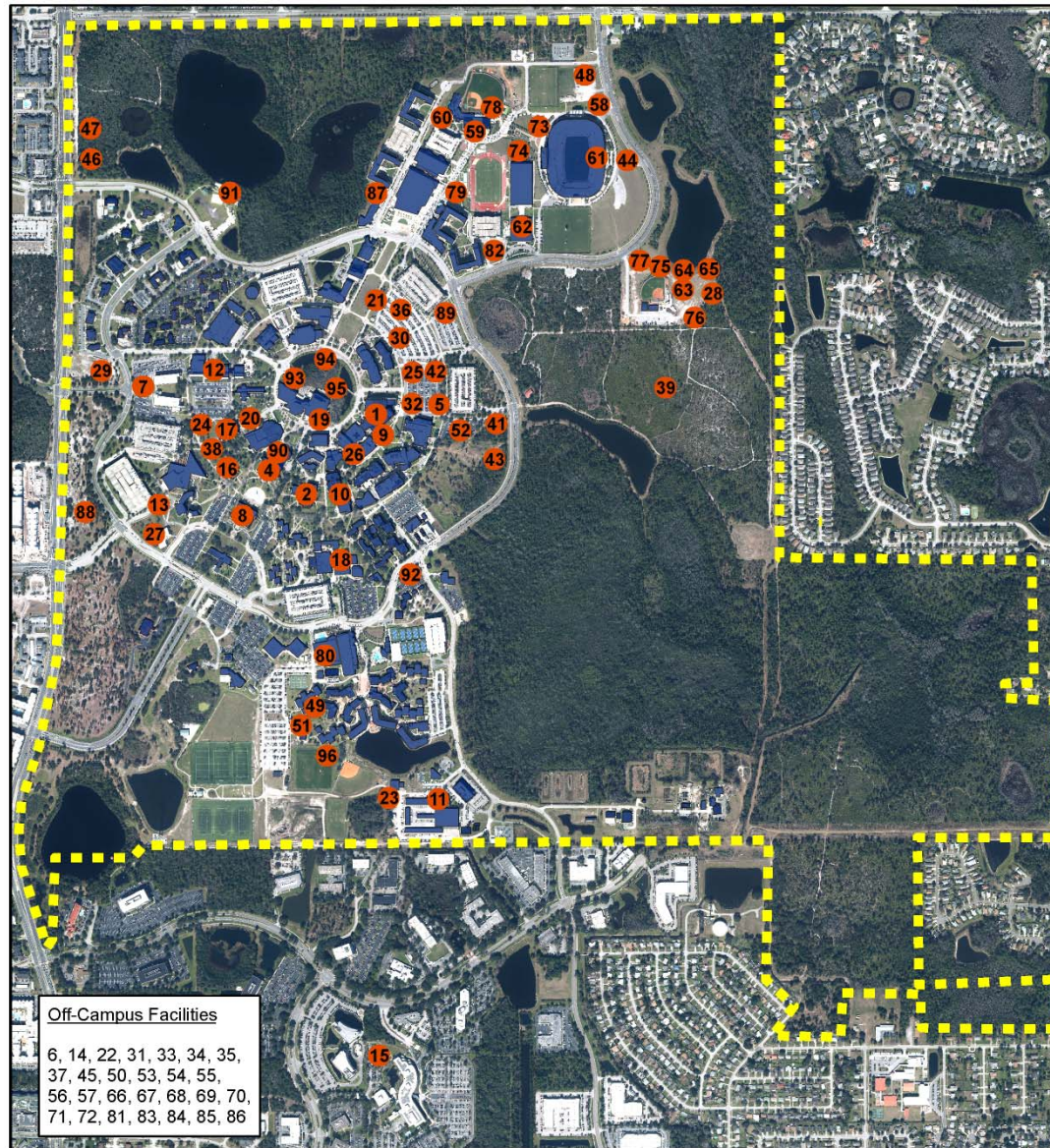


Figure 3-1

Urban Design and Capital Improvements

Comprehensive Master Plan Update
University of Central Florida
 Orlando, Florida
 2015-2025

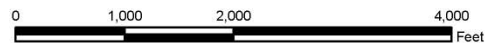
Legend

- 2015 Capital Improvements List Item
- Existing Buildings
- Boundary



All maps are diagrammatic and conceptual. The various areas shown are approximate and not to survey accuracy. The intent of these maps is to illustrate general areas of existing or potential use.

Rev. 2014.09.19



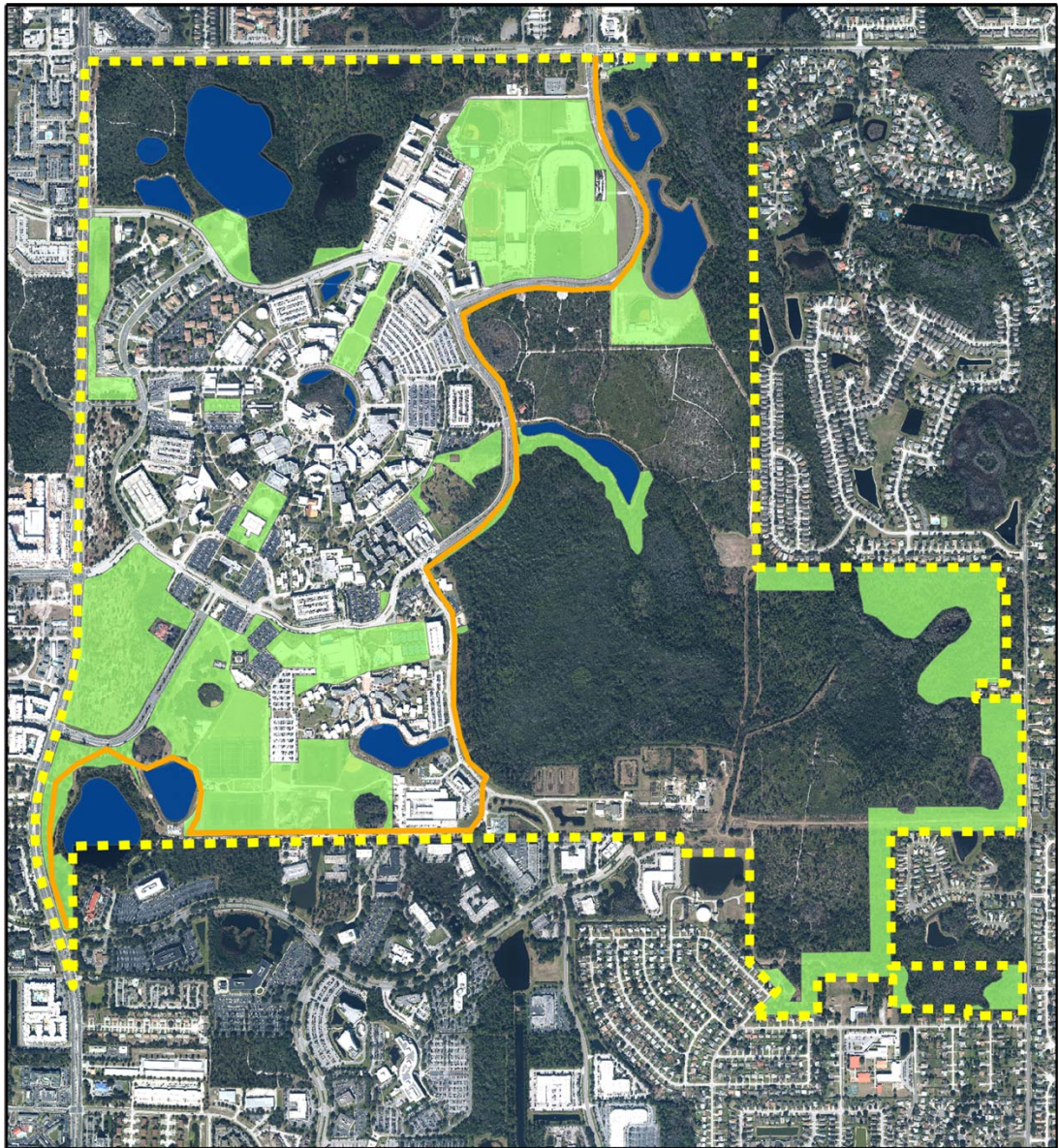


Figure 8-1

Recreation and Open Space

Comprehensive Master Plan Update
University of Central Florida
 Orlando, Florida
 2015-2025

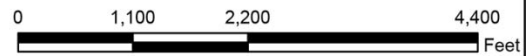
Legend

-  Boundary
-  Proposed Little Econ Greenway Trail
-  Recreation and Open Space
-  Lakes and Ponds



All maps are diagrammatic and conceptual. The various areas shown are approximate and not to survey accuracy. The intent of these maps is to illustrate general areas of existing or potential use.

Rev 20140709



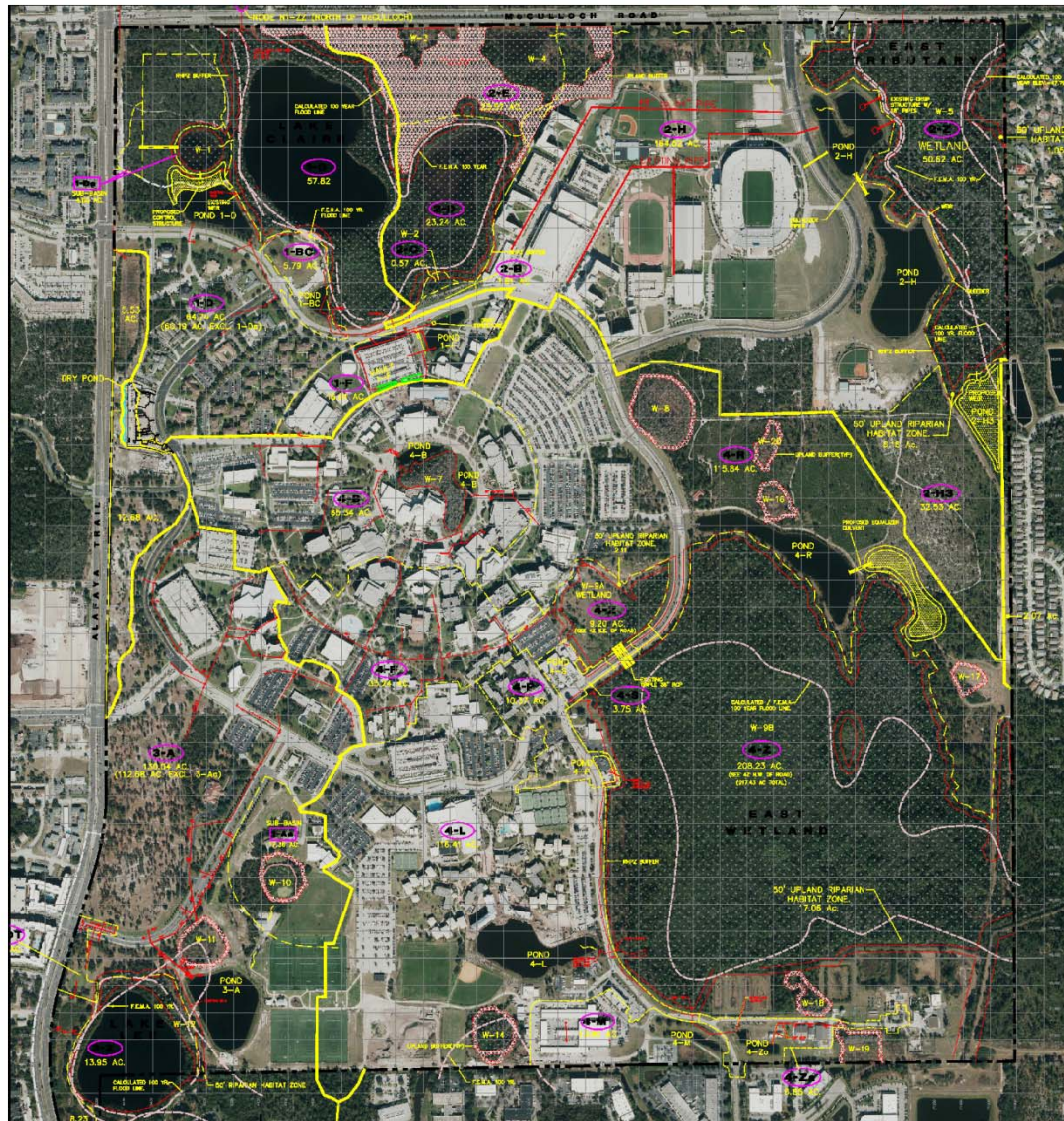


Figure 9-1

Stormwater Facilities

Comprehensive Master Plan Update
University of Central Florida
 Orlando, Florida
 2015-2025

LEGEND:

- | | | | |
|--|---------------------------------|--|--|
| | = BOUNDARY LINE | | = DIRECTION OF SURFACE FLOW |
| | = DRAINAGE DIVIDES | | = PROPOSED POND LOCATIONS |
| | = DRAINAGE BASIN DIVIDES | | = EXIST. STORMWATER STRUCTURES/CULVERTS. |
| | = DRAINAGE SUB-BASIN DIVIDES | | = PROP. STORMWATER STRUCTURES/CULVERTS. |
| | = SUB-BASIN IDENTIFICATION/AREA | | = F.E.M.A. 100 YR. FLOOD LINE |
| | = BASIN IDENTIFICATION/AREA | | = CALCULATED 100 YR. FLOOD LINE |



All maps are diagrammatic and conceptual. The various areas shown are approximate and not to survey accuracy. The intent of these maps is to illustrate general areas of existing or potential use.

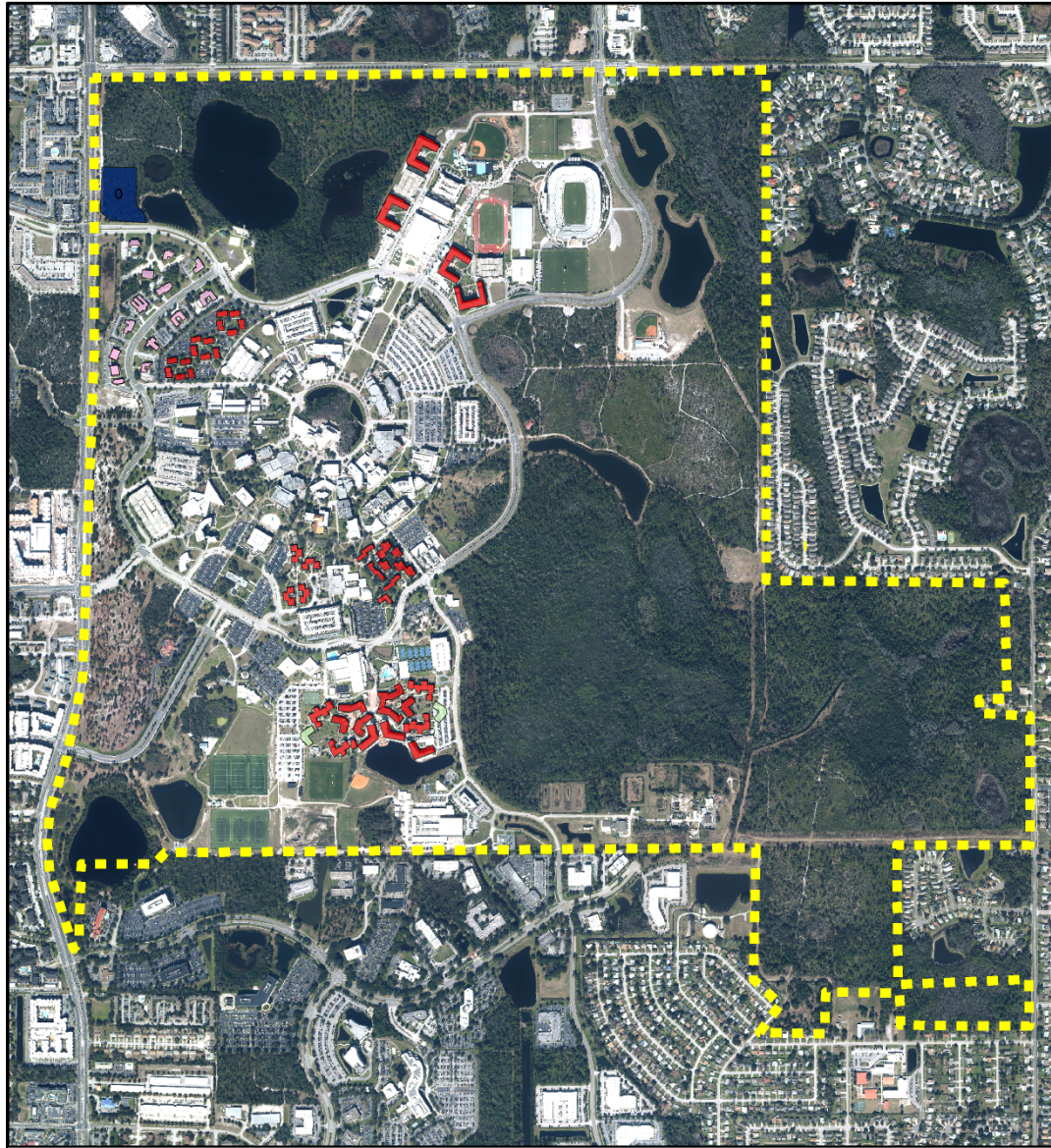


Figure 7-1

Existing and Planned Housing

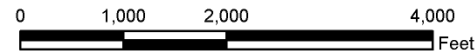
Comprehensive Master Plan Update
University of Central Florida
 Orlando, Florida
 2015-2025



All maps are diagrammatic and conceptual. The various areas shown are approximate and not to survey accuracy. The intent of these maps is to illustrate general areas of existing or potential use.

Legend

- Boundary
- Existing Campus Housing
- Special Interest Housing
- Academic Village Expansion
- Existing Greek Park Housing



Rev 20140617

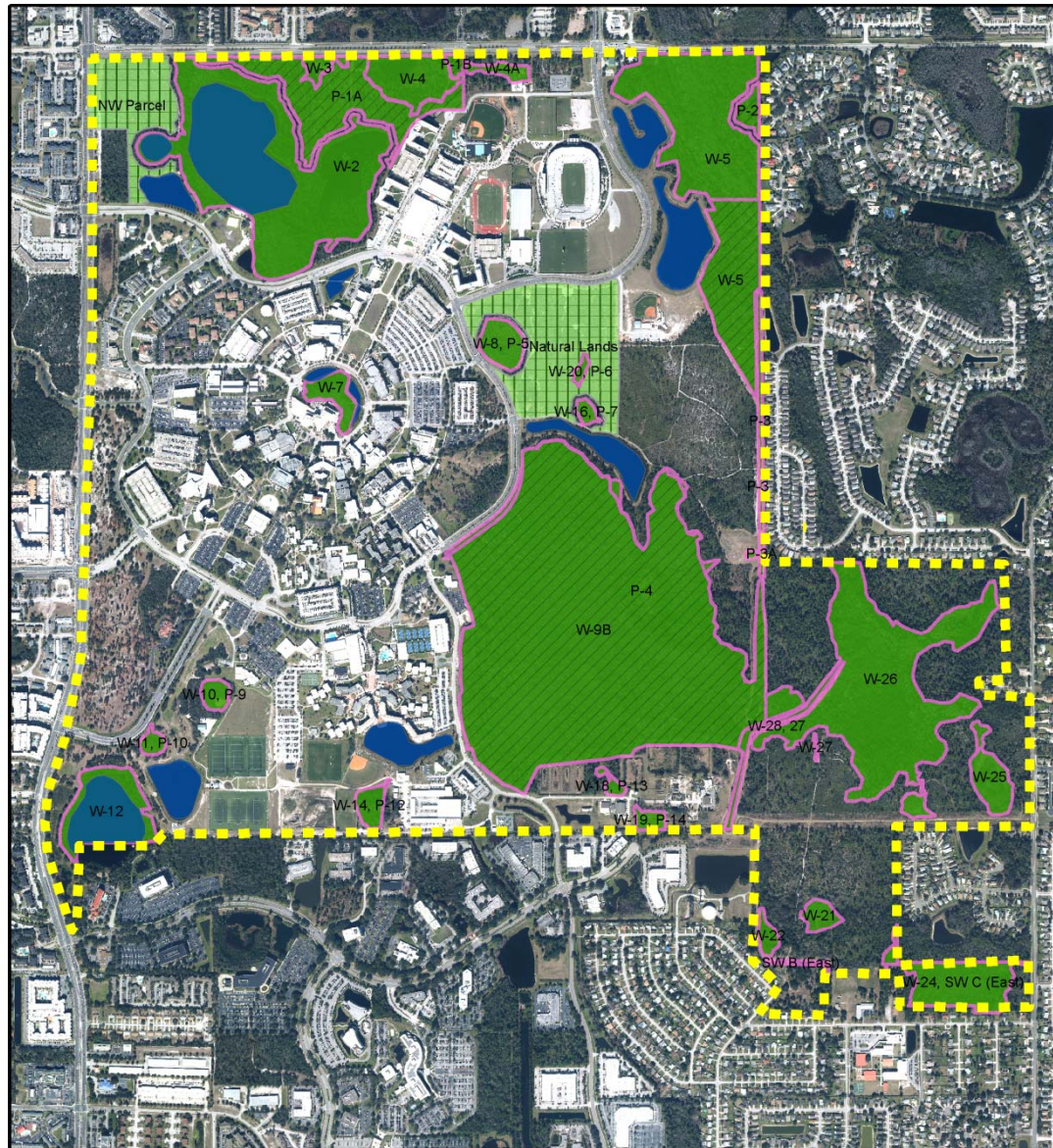







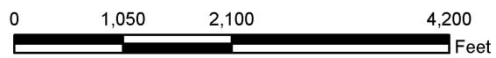
Figure 13-1

Conservation
 Comprehensive Master Plan Update
University of Central Florida
 Orlando, Florida
 2015-2025

All maps are diagrammatic and conceptual. The various areas shown are approximate and not to survey accuracy. The intent of these maps is to illustrate general areas of existing or potential use.

Legend

-  Conservation (upland)
-  Conservation (Wetland)
-  Lakes & Ponds
-  Conservation Easement
-  Boundary



Rev. 20140710

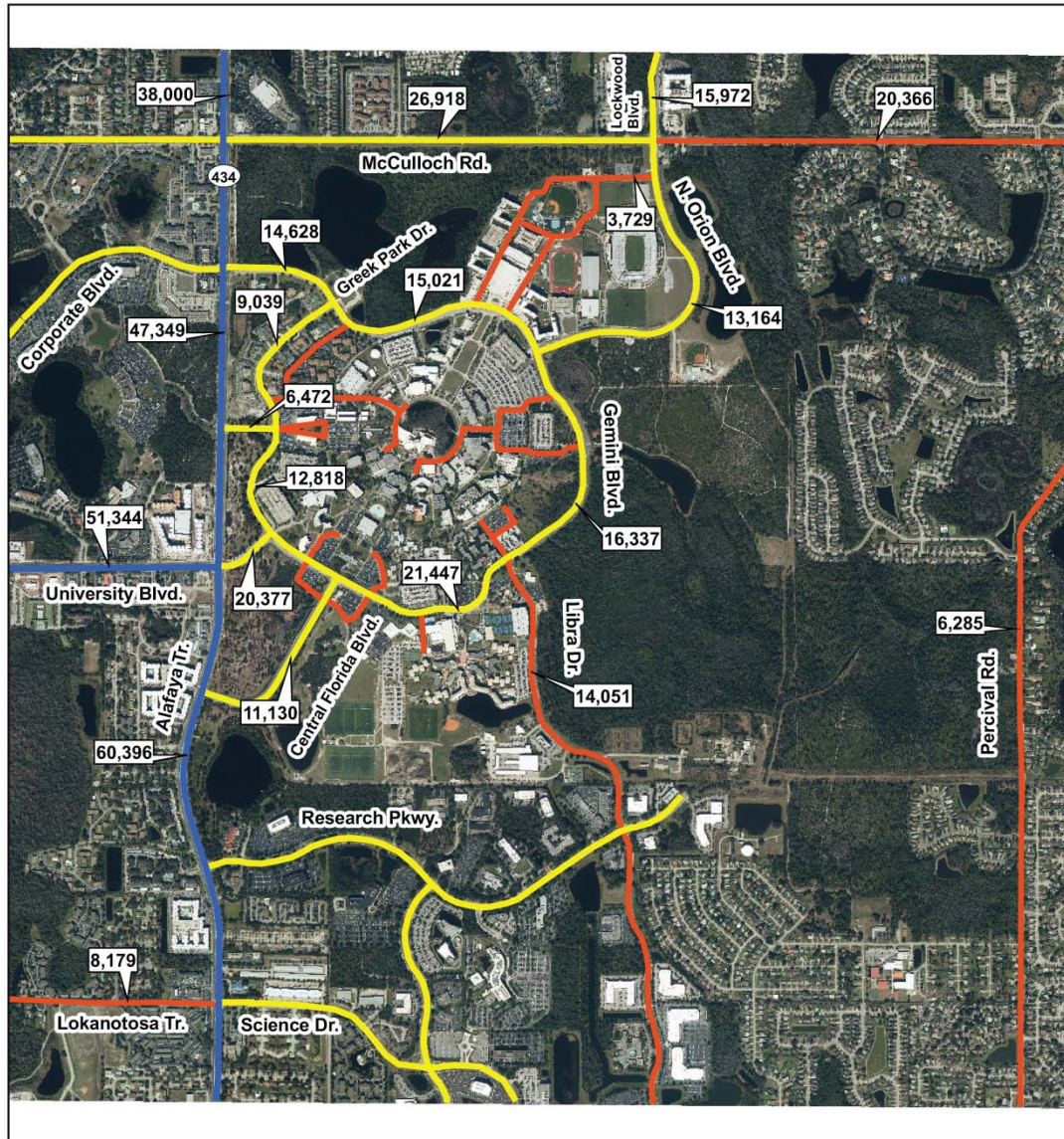


Figure 2.11-6

Existing Roadway Network and Daily Traffic Volumes

Comprehensive Master Plan Update
University of Central Florida
 Orlando, Florida
 2015-2025

All maps are diagrammatic and conceptual. The various areas shown are approximate and not to survey accuracy. The intent of these maps is to illustrate general areas of existing or potential use.

Legend

- 6-Lane Roadway
- 4-Lane Roadway
- 2-Lane Roadway
- 11,111 Average Daily Traffic



Public Comments

- Comment card
- Limit three (3) minutes



2015 Campus Master Plan Update

First Public Hearing

July 15, 2014



UNIVERSITY OF CENTRAL FLORIDA